



**HOUTEXPLOITATIE EN -  
VERWERKINGSONDERNEMING  
SOEKHOE EN ZONEN N.V.**

**ANNUAL OPERATION PLAN 2021/2022,  
Summary**

**Planning Period 8 (PP 8)**



FSC DOC S & Z - 05/2022  
Version 2022/1  
May 2022

## Annual Operation Plan 2021 -2022

### Table of Contents

1. Introduction .....	2
1.2 Concession license number and name of license holder .....	2
1.3 Brief physical description of concession .....	2
1.4 Kapvaks harvested and infrastructural works .....	4
1.5 Training .....	5
1.6 PSP's and Bio reserves .....	6
1.7 Bio reserves .....	6
1.8 Forest monitoring .....	7
1.9 Observation of unauthorized activities .....	7
2. Inventory and production forecast for Planning Period 8 .....	8
2.1 Kapvaks planned for PP8 .....	8
2.2 Transport .....	8
2.3 Marketing and certification .....	8
2.4 Occupational safety and health .....	8

### Exhibits

Exhibit 1- 1 Area of the concession 424a (21,720ha.) .....	3
Exhibit 1- 2 Overview of 424a kapvaks in PP7 .....	9
Exhibit 1- 3 Planned Kapvaks in 424a .....	10
Exhibit 1- 4 Planned Road map and PSP's .....	10
Exhibit 1- 5 Patrol map .....	12

# 1. Introduction

Houtexploitatie en –verwerkingsonderneming Soekhoe en Zonen N.V. in this document mentioned as Soekhoe en Zonen, presents this Annual Operations Plan (AOP) in partial fulfilment of the forest management requirements of the Foundation for Forest Management and Production Control, Stichting voor Bosbeheer en Bostoezicht (SBB).

This plan covers the plan period 8 (PP 8), nominally from July 2021 to July 2022, and is also to the upcoming annual audit as part of the FSC certification of the operations of Soekhoe and Zonen. This plan presents a brief description of the concession, an overview of previous activities and work to be carried out in PP 8, including production forecasts for those blocks where 100% pre-harvest inventory has been carried out, several maps showing the distribution of annual harvest area in harvest plots, main skidding roads and log landings, the established PSP's, the bioreserve areas and the IFL zones. This plan also provides an overview of the personnel and available equipment to be deployed.

The AOP forms part of the planning framework from Soekhoe en Zonen and has especially close links with the long-term Exploitation Plan, presented in 2011 and updated in 2014, 2018, 2019 and 2021.

## ***1.2 Concession license number and name of license holder***

Concession number: 424a

Company formal name: Houtexploitatie en –verwerkingsonderneming Soekhoe en Zonen N. V.

Director: Satinderdew Soekhoe

Address: Tout Lui Faut Br 45, Suriname

Telephone: +597 483378

Fax: +597 488094

Email: [soekhoezonen@soekhoezonen.com](mailto:soekhoezonen@soekhoezonen.com)

Website: [www.soekhoezonen.com](http://www.soekhoezonen.com)

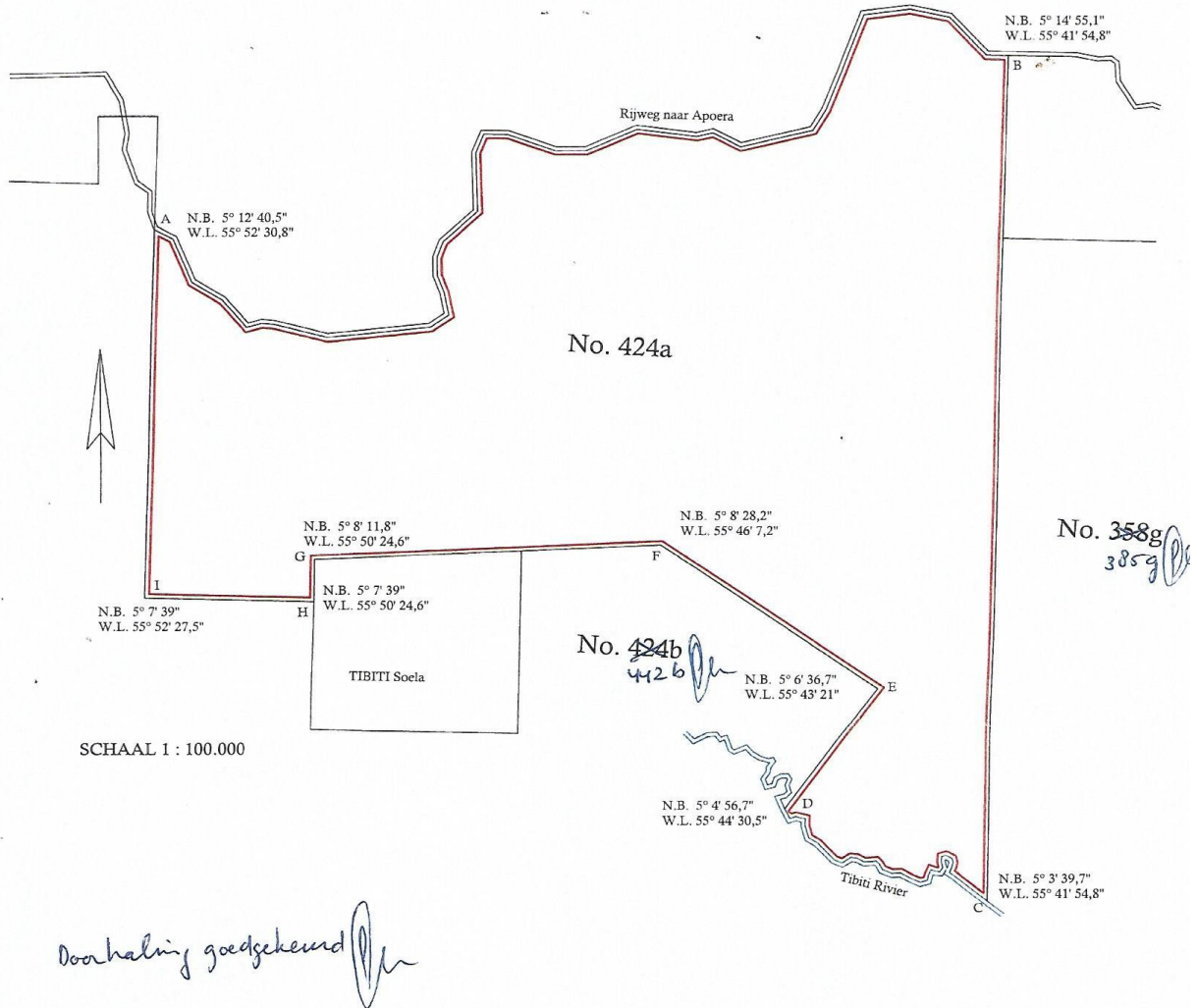
KKF registration: 300.88

## ***1.3 Brief physical description of concession***

This AOP covers the FME's concession 424a located along the Apura Road to the north of the Tibiti River in District Para.

The official gross area of the concession is still 21,720 ha. (See Exhibit 1-1) The terrain across the concession comprises moderate hills in the east divided by drainage valleys generally oriented in a north-west direction. The Tibiti River forms the southern boundary of the concession and to the west the land is low-lying with patches of marsh forest. Forest type is predominantly by high dryland mesophotic forest interspersed with creek forest along the main waterways and with discrete patches of savanna forest and mixed marsh/mesophotic forest.

**Exhibit 1- 1 Area of the concession 424a (21,720ha.)**



Figuratieve kaart betreffende het perceelland, vermoedelijk groot 21720 ha., aangeduid met de letters ABCDEFGHI, gelegen in de district Para, aan de Rijweg naar Apoera, bekend als Bosbouwterrein No. 424a.

In opdracht van *Houtexploitatie - en Verwerkingsonderneming SOEKHOE en ZONEN N.V.*, die op het bovenvermeld perceelland het recht tot EXPLOITATIE van HOUT wenst te verkrijgen, heb ik deze kaart vervaardigd.

Paramaribo, 13 mei 2020  
De beëdigde landmeter,  
G. A. Halfhede BSc.



### ***1.4 Kapvaks harvested and infrastructural works***

In the planning period PP 7, July 2020/July 2021, 18 kapvaks were active (see exhibit 1-2). Only 2 of these kapvaks (KV 60 and KV 61) were completely harvested and closed.

Because of the heavy rains, several planned activities have not been carried out.

From these 18 kapvaks, 16 are not completed. On these kapvaks the harvesting will proceed in the planning period PP8.

The production activities will depend strongly on the weather: the heavy rainfall is a limiting factor for the operations.

No new bridges were constructed.

Due to heavy rain almost through the whole year, maintenance of primary and secondary roads in 424a was a big problem. Not all the roads could be maintained. The precipitation was so big that water remain siting on the roads, large ponds of water arose on these roads, and on a few places the road was washed away. The road to kapvak 30 could be maintained, however not on its best.

Despite the heavy rains, 2 new roads have been built;

Road between kapvaks 100 and 101, ± 600 m

Road through kapvak 60 to the North to the existing Celos pasi, 1 km

However, these roads are at the moment not passable due to the heavy rains.

The planned road from the corner of Kabo port to kapvaks 13/14 could not be constructed and will remain in planning for the next future.

Another road is planned from the primary road at km 8 (straat1) to the west side to the Sparicreek.

No new roads or bridges are planned for the next planning period.

The base camp is still at the old location.

The workers camp of Lolo will be moved to kapvak 100, located in a side road of street 1. The other workers camps will remain on their place.

Three new workers camps are in place in the area of kapvak 60.

## ***1.5 Training***

During PP7 the following training-topics were conducted

- FSC Principles
- Safety & Health
- Usage of Safety Gear
- Gender Equality
- Dispute Resolution
- Decision making for the felling height. Safety and Efficient felling
- Reduced Impact Logging (theory)
- Skidding
- Directional Felling
- Chainsaw safety
- First aid
- Monitoring and Awareness
- Usage of Fire Extinguisher
- Machinery Checkup and Maintenance
- Relevant Laws and Regulations
- What is FSC
- FSC Principles

Stump height at felling

- Decision making for the felling height.
- Stump height measurement
- Safety felling
- Efficient felling

RIL(Reduced Impact Logging)

- Reduced Impact Logging (theory)
- Skidding
- Directional Felling
- Skid trail Alignment and construction
- Road maintenance

Chainsaw and Heavy equipment maintenance

- Chainsaw service refreshment
- Heavy equipment service and maintenance refreshment

No accidents or disputes occurred in 2021/ May 2022

## **1.6 PSP's and Bio reserves**

In 202/2022 2 new PSP's were established

- PSP 12 (along the bio line, straat 1 km 4,5)  
Coordinates:
  - A 0641906/0574472
  - B 0574472/ 0574472
  - C 0574372/ 0641906
  - D 0574372/ 0642006
  
- PSP 13 (along the Apura road in old kapvak 3)  
Coordinates:
  - A 0636923/0578392
  - B 0637023/0578392
  - C 0637023/0578292
  - D 0636923/0578292

2 existing PSP's were reassessed

- PSP 6 (location: road to old Gebby Camp)  
Coordinates:
  - A 0628291/0571109
  - B 0628187/0571109
  - C 0628187/0571205
  - D 0628291/0571210
  
- PSP 7 (location:road to old meester camp)  
Coordinates:
  - A 0639278/ 0575925
  - B 0639378/ 0575925
  - C 0639278/ 0576025
  - D 0639378/ 0576025

(See Exhibit 6-11).

## **1.7 Bio reserves**

On the concession area, 2 Bio reserves are established. Both are completed:

- At the both side of straat 1, starting at km 4,5 to the corner of Celos pasi
- At the corner of Tibiti Soela road to the southern border line of the Tibiti river

## **1.8 Forest monitoring**

Regular monitoring of the forest and patrolling is being carried out by the company as part of its normal procedures. Monitoring topics are:

- OSH (Field)
- Forest Patrol
- Operations checklists
- Community, NTFP's
- HCVF
- PSP

In addition, monitoring of the requirements of FSC FM and the CoC system will also be undertaken. As a result of previous monitoring the following items are now integrated in the planning process of the FME:

2. Refresher training in RIL techniques
3. Maintenance of camps to the required standards
4. Monitoring and restriction of hunting in the concession
5. Completion of Permanent Sample Plots

Immediate monitoring will be done end of June 2022, as the annual audit is planned for July 2022.

There are no plans for any specific public awareness activities though the company maintains its website. Normal marketing activities will continue in the planning period.

Workplace health and safety protocols protect the worker against hazards on the job. Both the company and workers have responsibilities.

Strictly, the control of illegal or unauthorized activities on the concession is outside the mandate of the concessionaire. Nevertheless, the FME recognizes its responsibilities as a forest manager to monitor and records instances of illegal logging, unauthorized agriculture, encroachment and illegal hunting in the concession.

In cases where such activities are observed the FME will take appropriate measures itself or for more seriously occurrences inform and liaise with the proper law enforcement agencies to seek resolution.

The map of patrols is presented in Exhibit 6-8.

## **1.9 Observation of unauthorized activities**

No unauthorized activities were observed during routine forest patrols.



## **2. Inventory and production forecast for Planning Period 8**

### ***2.1 Kapvaks planned for PP8***

17 kapvaks from the previous planning period are now still active as they were not completed yet. In addition to these kapvak 7 new kapvaks are planned for PP8. These are the kapvaks from 106 to 112

In PP8 on the remaining not completed 16 kapvaks the harvesting will proceed. In addition to these, 7 new kapvaks are planned for PP8. These are the kapvaks from # 106 to 112 (see Exhibit 6-9). Inventory has been conducted for the kapvaks 102 and 103.

### ***2.2 Transport***

Transport of wood from the concession is only possible by land. Transporting outside the concession area, should only take place with a valid ticket (VVB)

### ***2.3 Marketing and certification***

Normal marketing activities will continue in the planning period. In addition, the company will prepare for its annual audit for its FSC- CoC and FSC FM/CoC to be carried out in July 2022

### ***2.4 Occupational safety and health***

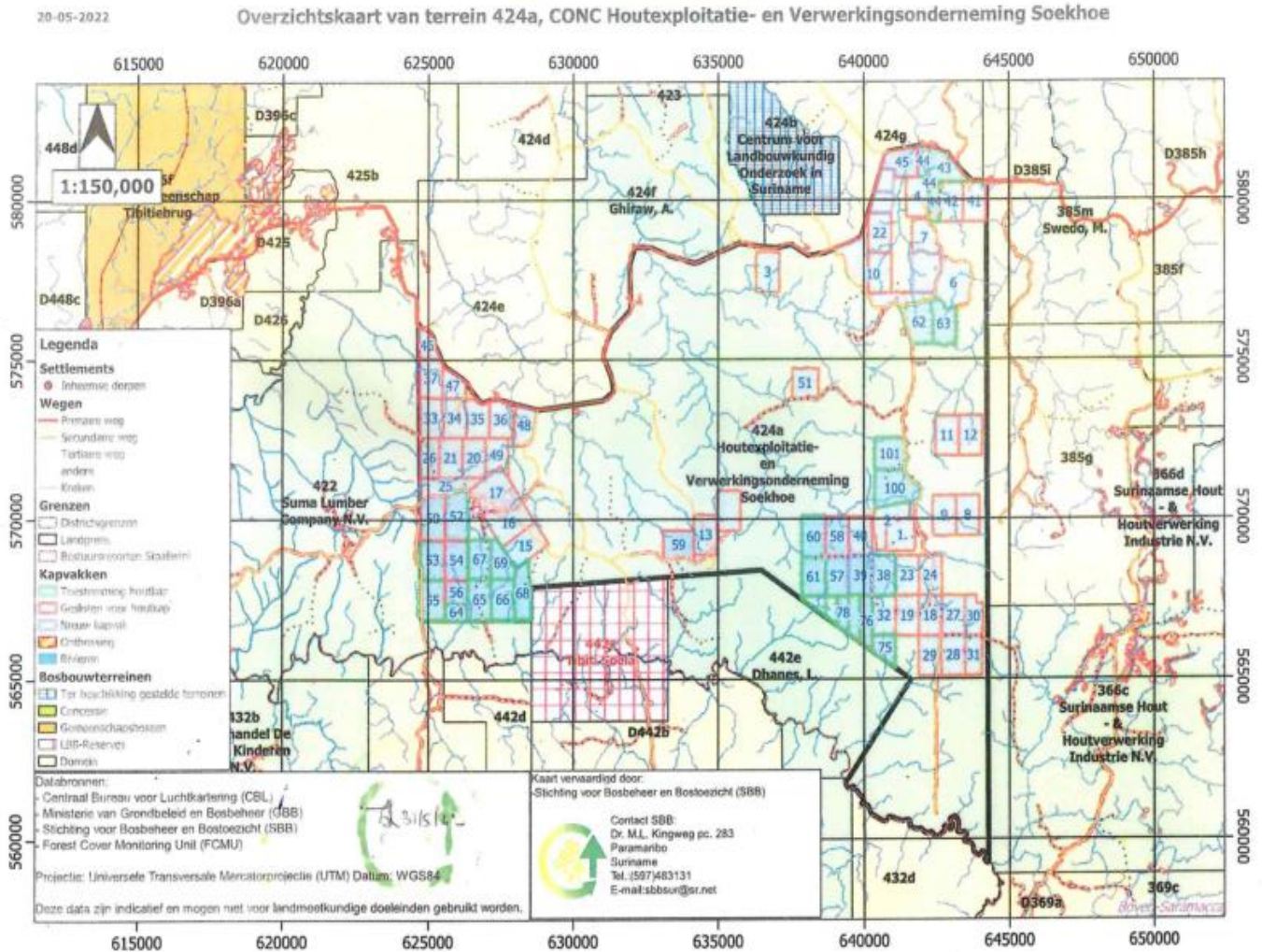
Workplace safety and health protocols protect the worker against hazards on the job. Both the company and workers have responsibilities

General working conditions will get special attention as a result of monitoring.

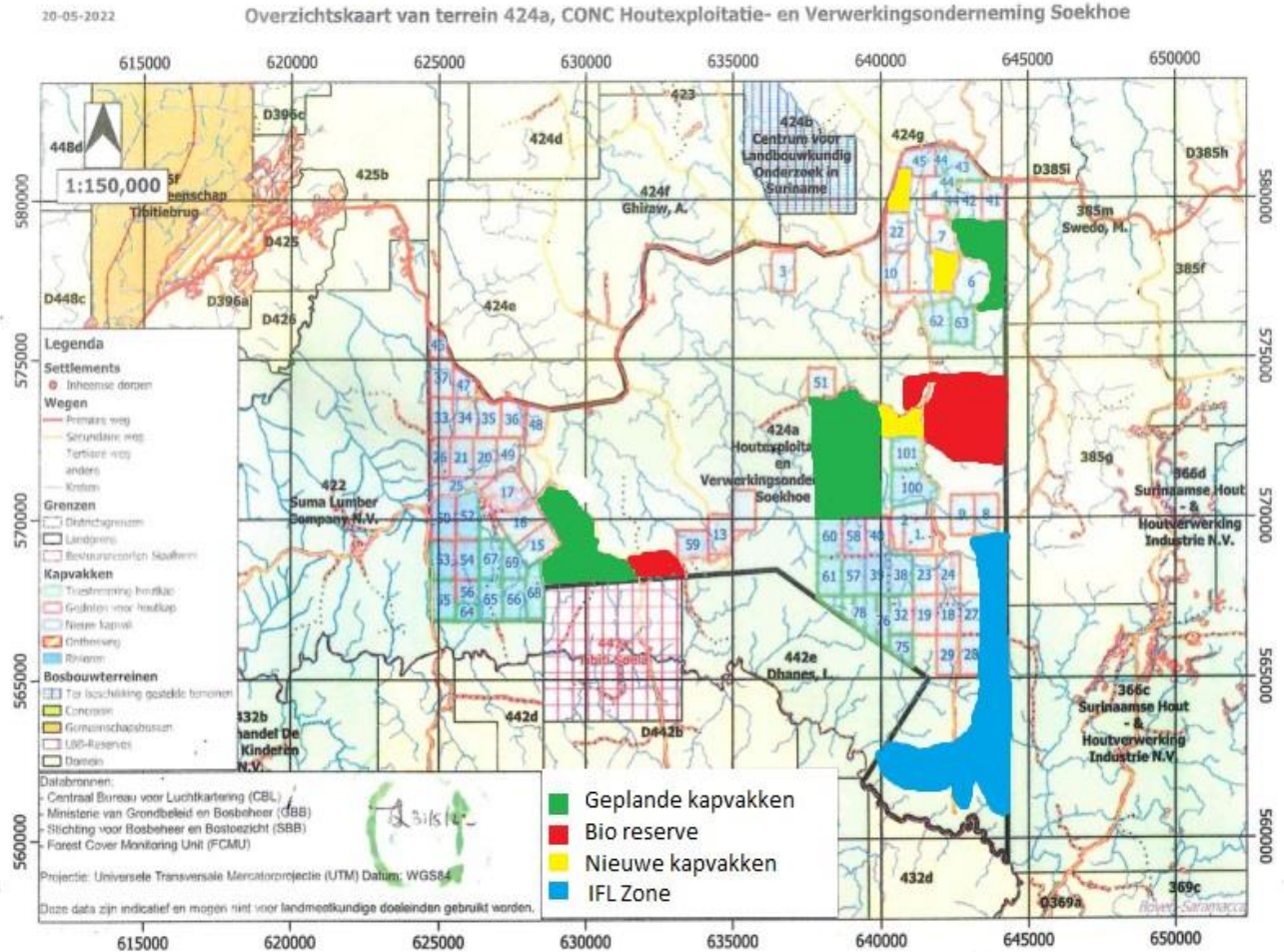
# Exhibit 1- 2 Overview of 424a kapvaks in PP7

exhibit 6-4

Bestaande kapvakk

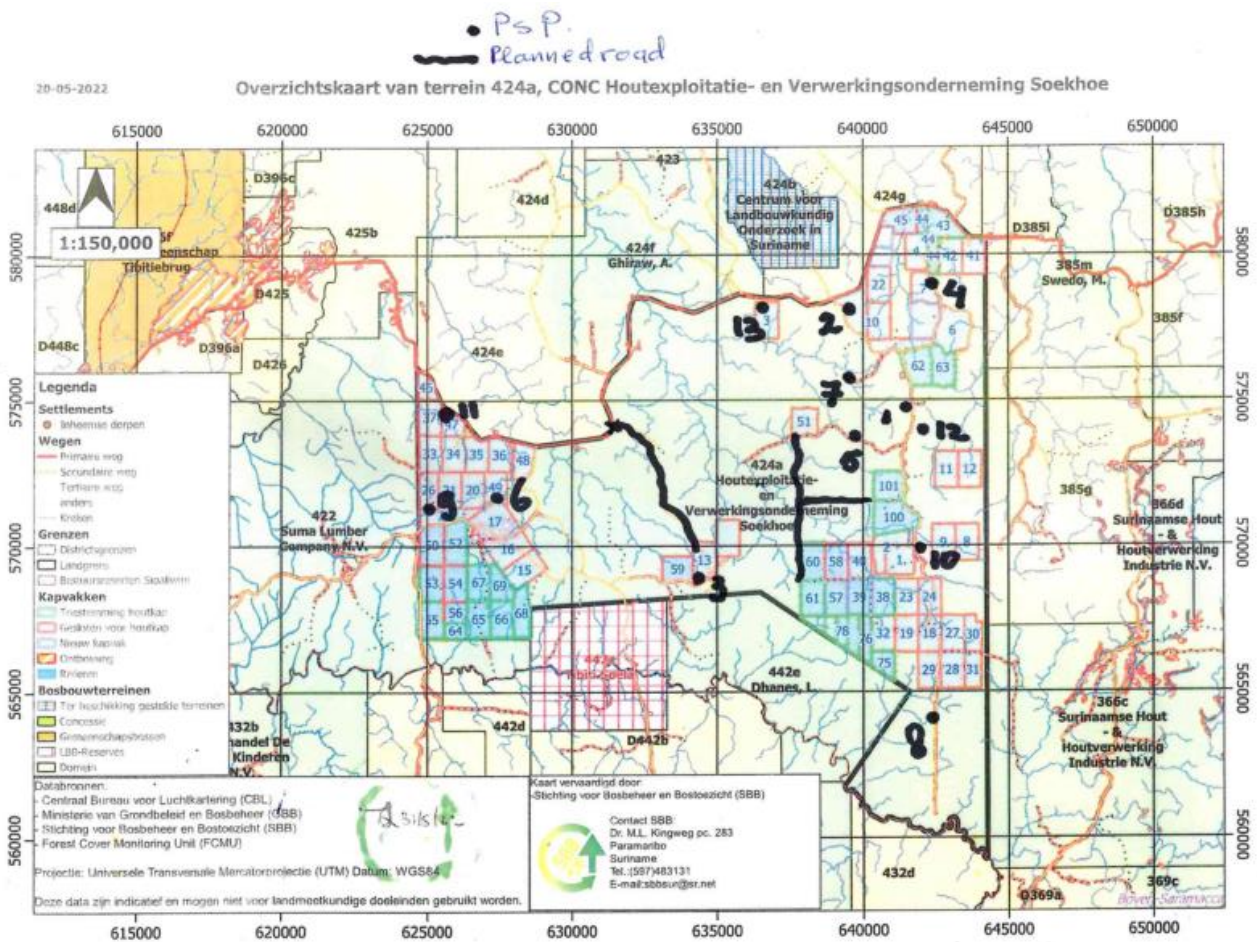


### Exhibit 1- 3 Planned Kapvaks in 424a





# Exhibit 1- 4 Planned Road map and PSP's



# Exhibit 1- 5 Patrol map

*Patrol map*

